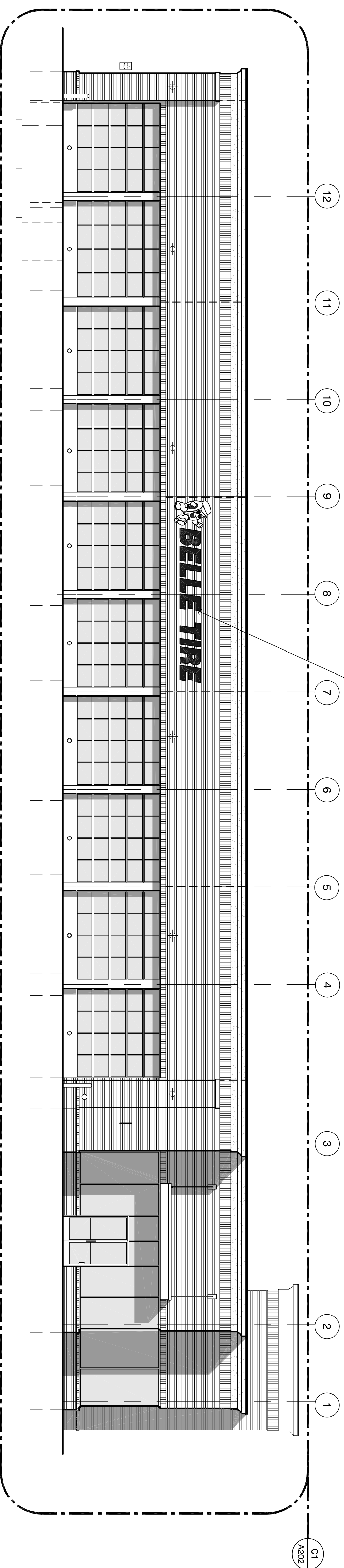
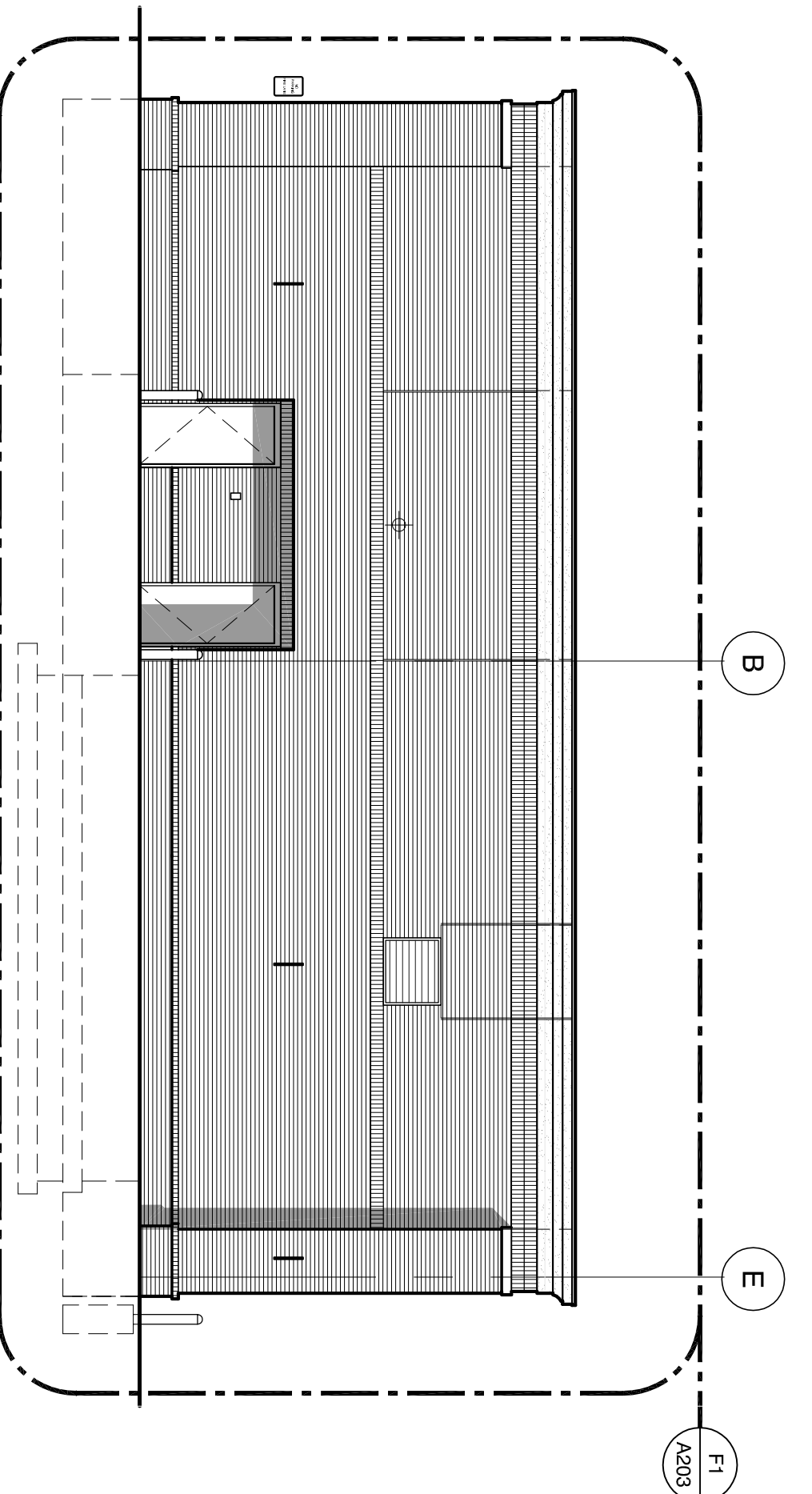


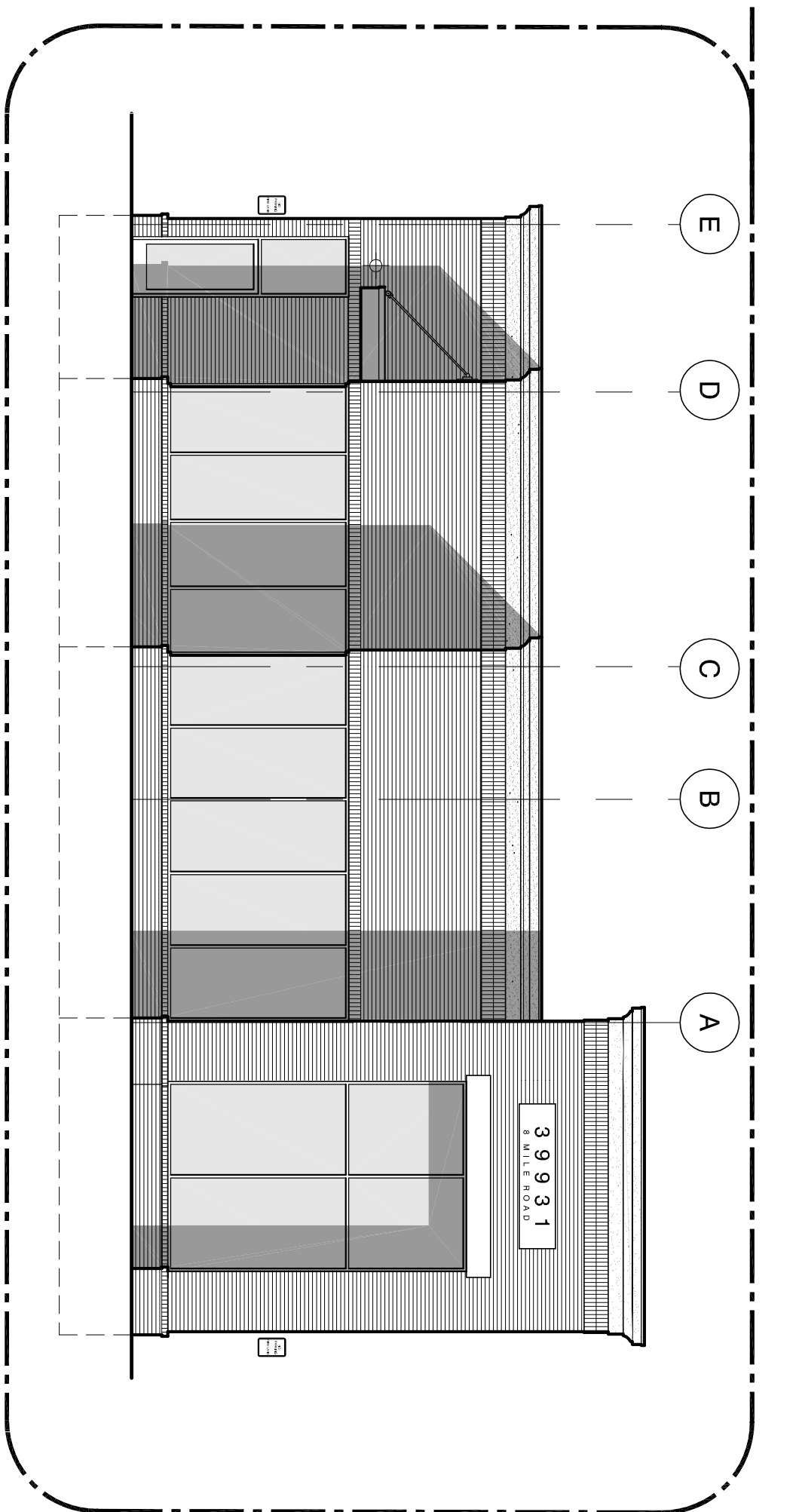
NOTE:
SIGN SHOWN FOR GENERAL PLACEMENT AND GRAPHIC INTENT ONLY. DOCUMENTS AS SUBMITTED BY HARMON SIGN PLANTER NEON FOR SPECIFIC AREAS, DETAILS AND COLORS.



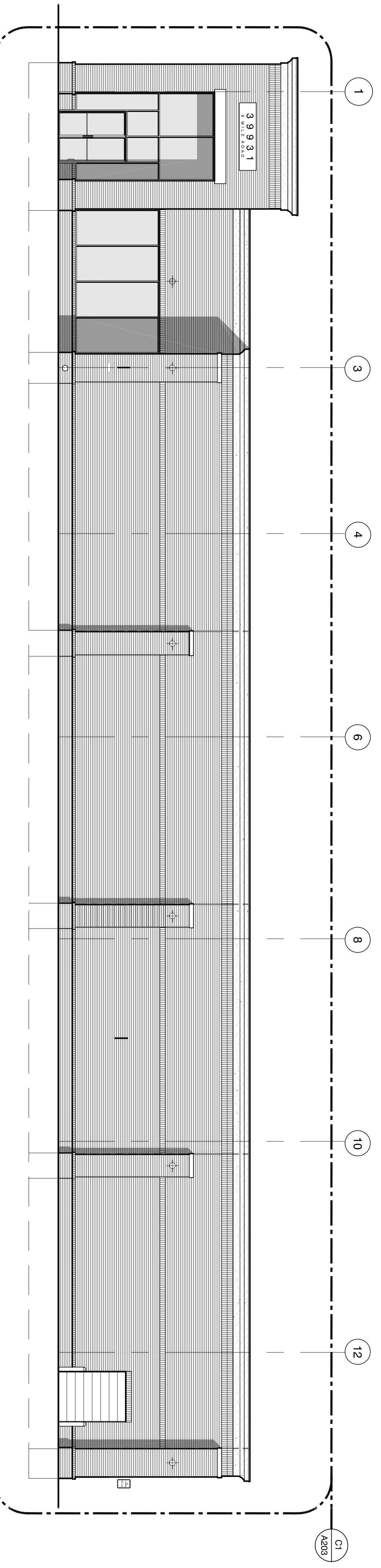
B1 South Elevation
SCALE: 1/8" = 1'-0"



D1 West Elevation
SCALE: 1/8" = 1'-0"



D5 East Elevation
SCALE: 1/8" = 1'-0"



F1 North Elevation
SCALE: 1/8" = 1'-0"

MATERIALS:

MARK	MATERIAL	DESCRIPTION
EFRS-1	E.F.F.S.	STO-STOUT 1.0 MOONLIT SAND 10611-64
B-1	FACE BRICK	HEARTLAND WOODBURY BY GLEN-GERY BRICK CO.
GL-1	GLAZING SYSTEM	GLAZING - 41NSUL - PRO SOLARBAND 60 SOLAR CONTROL LOW E-GLASS - LOW REFLECTIVE INSULATING GLASS - IN CLEAR ANODIZED FRAMING SYSTEM SERIES 200 BY TUBELIGHT CORP. PROVIDE TEMPERED GLASS AS REQUIRED
MC-1	COPIING	DURO-LAST 2 PIECE SNAP-ON METAL FASCIA - KYNAR FINISH - COLOR TO MATCH EIFS
MC-2	COPIING	DURO-LAST 2 PIECE SNAP-ON METAL FASCIA - KYNAR FINISH - COLOR TO BE SELECTED
PS-1	PRE-CAST CONC. STONE	PRE-CAST CONCRETE STONE - BUFF SUMMIT SAMPLE FOR ARCHITECTS APPROVAL
P-1	PAINT	#2233 CAPE COD GREY - INDUSTRIAL ENAMEL PRATT & LAMBERT / #7666 GRAY MATTERS SHERWIN WILLIAMS
P-2	PAINT	GRENAOIER RED - PRATT & LAMBERT
P-3	PAINT	PAINT TO MATCH EIFS
P-4	PAINT	DRYFALL - BRILLIANT WHITE
P-5	PAINT	GENERAL WHITE - INDUSTRIAL ENAMEL PRATT & LAMBERT
P-7	PAINT	BLACK SEMI-GLOSS - ALL MANUFACTURERS
P-8	PAINT	HC-75 MARYVILLE BROWN
RWB-1	RETAINING WALL STONE	*8" STRAIGHT SPLIT PREFABRICATED CONC. MASONRY RETAINING WALL UNITS AS MANUF. BY KEVSTONE RETAINING WALL SYSTEMS - COLOR - "WALNUT"



CHRISTOPHER HARP ARCHITECTS
A PROFESSIONAL CORPORATION
639 E. Durant Avenue
Suite 106
Royal Oak, MI 48067
248.258.6485 (O)
248.330.9395 (C)
cearth@christopherharparchitects.com

Belle Tire
Northville Twp. MI
Meijer Outlot #54
39931 8 Mile Road
Northville Township, MI 48167

Exterior Elevations

Revised: February 12, 2016
Owner Review: February 12, 2016
Site Plan / Special Land Use: February 26, 2016
Final Site Plan: May 25, 2016
REVISD Final Site Plan: July 22, 2016
BIDDING / PERMIT: February 16, 2017

Project Number: **15-540**

Sheet Number: **A201**