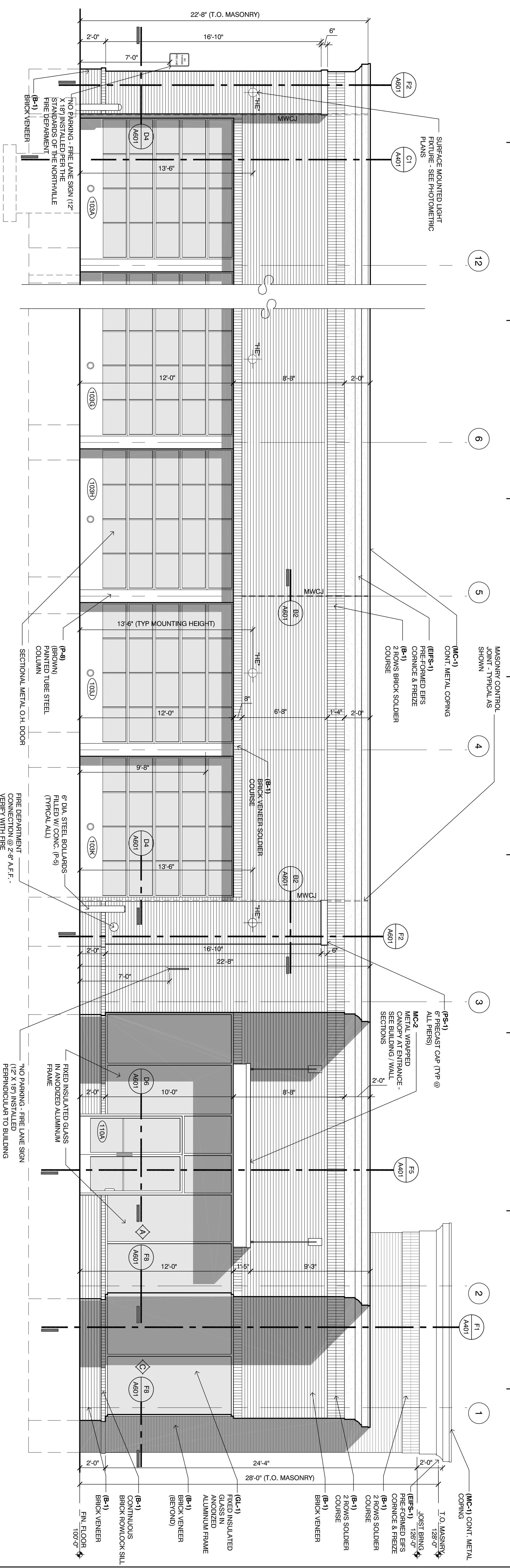


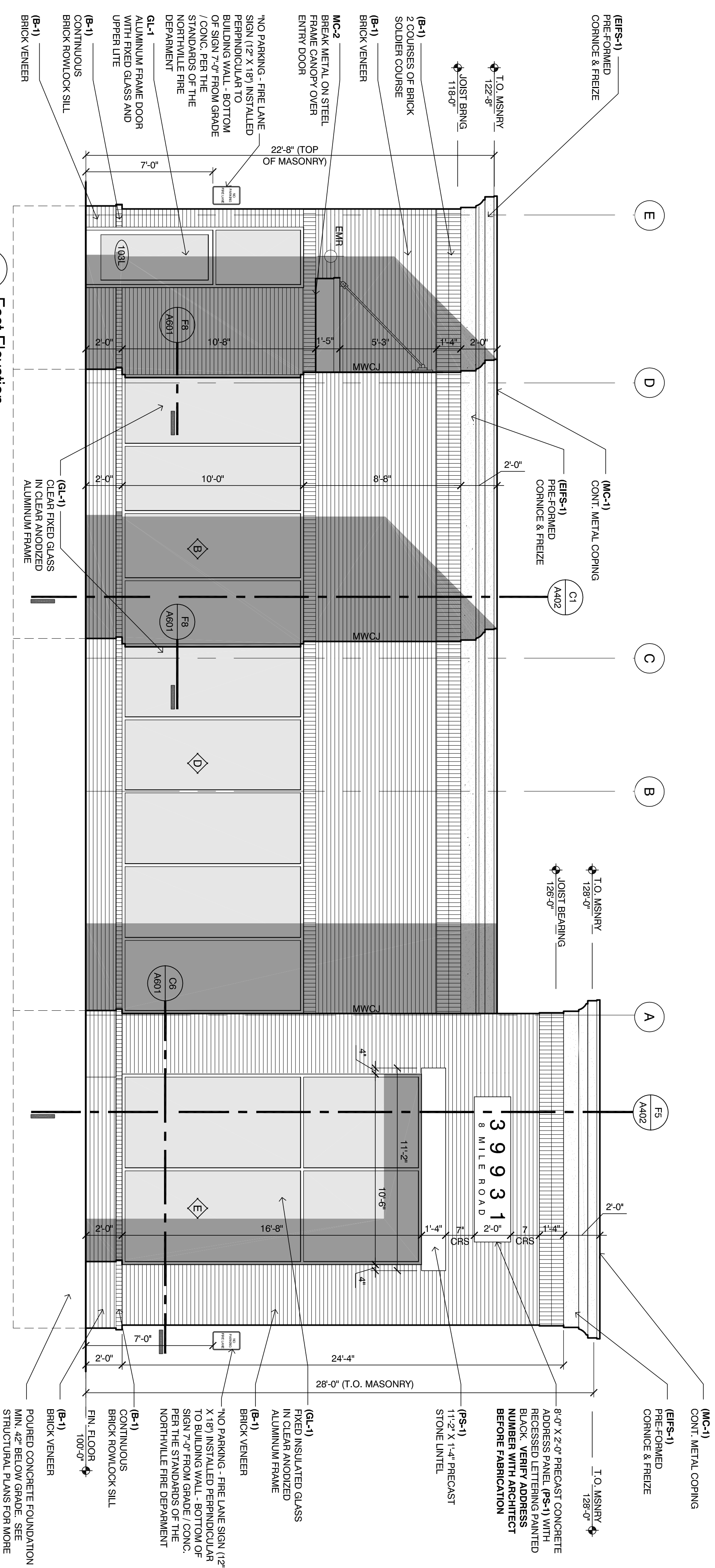


CHRISTOPHER ROBERT ARCHITECTS
A PROFESSIONAL CORPORATION

629 E. Durant Avenue
Royal Oak, MI 48067
248.258.6485 (O)
248.330.9395 (C)
cra@crarchitects.com



South Elevation
SCALE: 1/4" = 1'-0"



East Elevation
SCALE: 1/4" = 1'-0"

MATERIALS:

MARK	MATERIAL	DESCRIPTION
EFRS-1	E.L.F.S.	STO-STOUT 1.0 MONOLIT SAND 10611-64
B-1	FACE BRICK	HEARTLAND WOODBURY BY GLENVIEW BRICK CO.
GL-1	GLAZING SYSTEM	GLAZING: 1" INSUL. - FPG SOLARBRAND 60 SOLAR CONTROL LOW E CLEAR. LOW REFLECTIVE INSULATING SYSTEM. CLEAR ANODIZED FRAMING SYSTEM. PROVIDE TEMPERED GLASS AS REQUIRED.
MC-1	COPING	DUPOLAST 2 PRECAST CONCRETE METAL COPING - KNAR FINISH - COLOR TO MATCH ERS
MC-2	COPING	DUPOLAST 2 PRECAST CONCRETE METAL COPING - KNAR FINISH - COLOR TO MATCH ERS
PS-1	PRE-CAST CONCRETE	PRE-CAST CONCRETE STONE - BUFF SUBMIT SAMPLE FOR ARCHITECTS APPROVAL
P-1	PAINT	#2333 CAPE COOD GREY - INDUSTRIAL ENAMEL PRATT & LAMBERT / #7566 GRAY MATTERS SHERWIN WILLIAMS
P-2	PAINT	GRENLADER RED - PRATT & LAMBERT
P-3	PAINT	PAINT TO MATCH ERS
P-4	PAINT	GENERAL WHITE - INDUSTRIAL ENAMEL PRATT & LAMBERT
P-5	PAINT	DRYFALL - BRILLIANT WHITE
P-6	PAINT	BLACK SEMI-GLOSS - ALL MANUFACTURERS
P-7	PAINT	HG-75 MARYVILLE BROWN
P-8	PAINT	#8 STRAIGHT SPLIT PRE-FABRICATED CONC. MASONRY RETAINING WALL UNITS AS MANUF. BY RETAINING WALL SYSTEMS
RWB-1	RETAINING WALL STONE	SYSTEMS - COLOR - VARIANT

NOTE:
SEE SHEET A901 FOR GLAZING FRAME DIMENSIONS, LOCATION AND NOTES

Belle Tire
Northville Twp. MI
Meijer Outlot #54
39931 8 Mile Road
Northville Township, MI 48167

Exterior Elevations

Owner Review: February 12, 2016
Site Plan / Special Land Use: February 26, 2016
Final Site Plan: May 25, 2016
REVISED Final Site Plan: July 22, 2016
BIDDING / PERMIT: February 16, 2017

15-540

A 202