



CHRISTOPHER ROBERT ARCHITECTS
A PROFESSIONAL CORPORATION
659 E. Durant Avenue
Suite 100
Royal Oak, MI 48067
248.258.6495 (O)
248.330.9395 (C)
cmrgh@cmrgharchitects.com

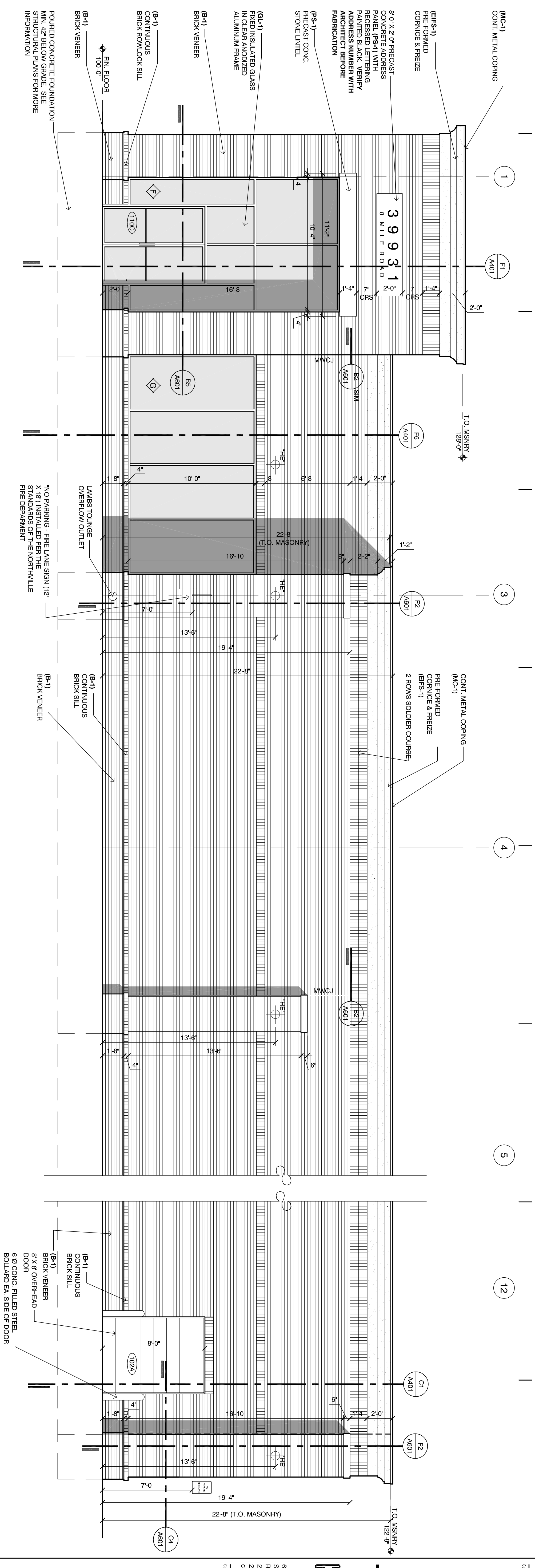
Belle Tire
Northville Twp. MI
Meijer Outlot #54
39931 8 Mile Road
Northville Township, MI 48167

Exterior Elevations

Owner Review: February 12, 2016
Site Plan / Special Land Use: February 26, 2016
Final Site Plan: May 25, 2016
REVISED Final Site Plan: July 22, 2016
BIDDING / PERMIT: February 16, 2017

15-540

A 203



North Elevation
SCALE: 1/4" = 1'-0"

West Elevation
SCALE: 1/4" = 1'-0"

MARK	MATERIAL	DESCRIPTION
ELFS-1	ELFS S.	STO STOUT 1.0 MASONRY SAND 10811-64
B-1	FACE BRICK	HEATLAND MASONRY BY GLENDALE BRICK CO.
GL-1	GLAZING SYSTEM	GLAZING: 1" INSUL. - PPG SOLARBRAND 60 SOLAR CONTROL LOW E CLEAR. LOW REFLECTIVE INSULATING GLASS - SERIES 200 BY TUBELIGHT CORP. PROVIDE TEMPERED GLASS AS REQUIRED.
MC-1	CORING	DUPLO-FAST 2 PIECE SNAP-ON METAL FASCIA - KNVAR FINISH - COLOR TO MATCH EPS.
MC-2	CORING	DUPLO-FAST 2 PIECE SNAP-ON METAL FASCIA - KNVAR FINISH - COLOR TO BE SELECTED.
PS-1	PRE-CAST CONC. STONE	PRE-CAST CONCRETE STONE - BUFF SUBMIT SAMPLE FOR ARCHITECT'S APPROVAL.
P-1	PAINT	#2333 CAPR COD GREY - INDUSTRIAL ENAMEL PAINT & LAMBERT #7085 GRAY GRENADIER RED - PAINT TO MATCH EPS.
P-2	PAINT	PAINT TO MATCH EPS.
P-3	PAINT	DRY-FALL - BRILLIANT WHITE.
P-4	PAINT	GENERAL WHITE - INDUSTRIAL ENAMEL PAINT & LAMBERT.
P-5	PAINT	BLACK SEMI-GLOSS - ALL MANUFACTURERS.
P-7	PAINT	HC-75 MARYVILLE BROWN.
P-8	PAINT	#8 STRAIGHT SPLIT PREFABRICATED CONC. MASONRY RETAINING WALL FINISH AS SHOWN.
RWE-1	REINFORCING WALL STONE	#8 STRAIGHT SPLIT PREFABRICATED CONC. MASONRY RETAINING WALL FINISH AS SHOWN. COLOR - "WALNUT".

NOTE:
SEE SHEET A901 FOR GLAZING FRAME DIMENSIONS, LOCATION AND NOTES