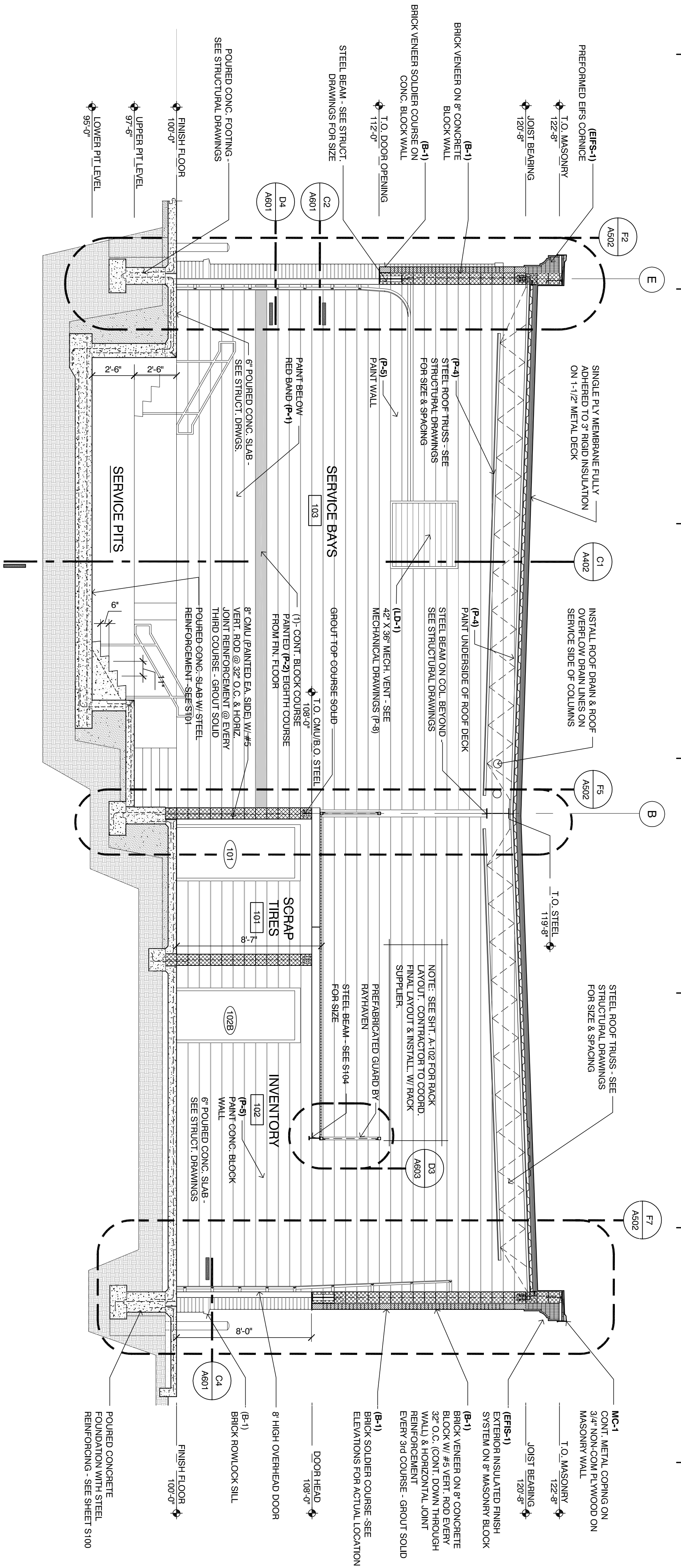




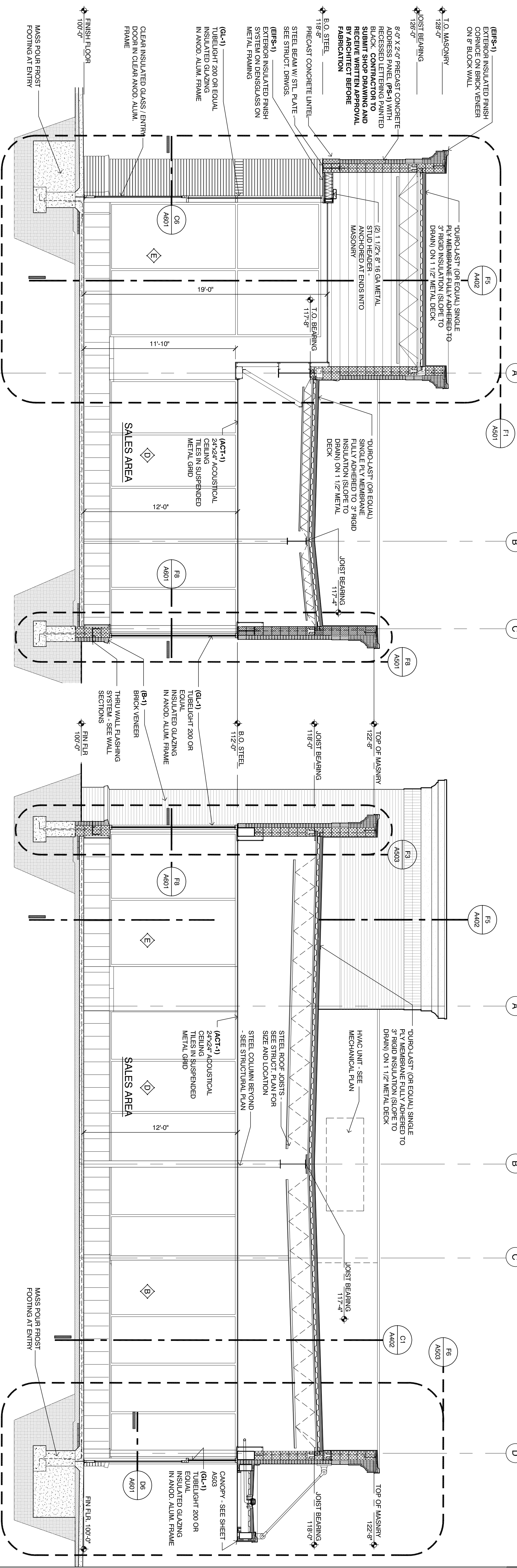
**CHRISTOPHER LAMBERT ARCHITECTS**  
A PROFESSIONAL CORPORATION

629 E. Beant Avenue  
Suite 106  
Royal Oak, MI 48067  
248.258.6495 (O)  
248.330.9895 (C)  
cmr@chlambert.com  
cmr@chlambert.com

MARK	MATERIAL	DESCRIPTION
ERS-1	EIFS	STO STUOT 1.0 WOODLUT SAND 10811-64
B-1	FACE BRICK	HEART AND WOODBURY BY GLEN-DERY BRICK CO.
GL-1	GLAZING SYSTEM	GLAZING: 1" INSUL. - PPG SOLARBRAND 60 SOLAR CONTROL LOW-E CLEAR - IN CLEAR ANODIZED FRAMING SYSTEM SERIES 200 BY TUBELIGHT CORP. PROVIDE TEMPERED GLASS AS REQUIRED
MC-1	CORNING	DURO-LAST 2 PIECE SNAP-ON METAL FASCIA - KYNAR FINISH - COLOR TO MATCH ERS
MC-2	CORNING	DURO-LAST 2 PIECE SNAP-ON METAL FASCIA - KYNAR FINISH - COLOR TO BE SELECTED BY ARCHITECT
PS-1	PRE-CAST CONC. STONE	PRE-CAST CONCRETE STONE - SURF SUBMIT SAMPLE FOR ARCHITECT'S APPROVAL
P-1	PAINT	2323 CARB DOO GREY - INDUSTRIAL MATTERS SHERWIN WILLIAMS 9099 GRAY
P-2	PAINT	GREENWATER RED - PRATT & LAMBERT
P-3	PAINT	PAINT TO MATCH ERS
P-4	PAINT	DRYFALL - BRILLIANT WHITE
P-5	PAINT	GENERAL WHITE - INDUSTRIAL ENAMEL PRATT & LAMBERT
P-7	PAINT	BLACK SEMI-GLOSS - ALL MANUFACTURERS
P-8	PAINT	HC-75 MARYVILLE BROWN
RMB-1	REPAIRING WALL STONE	THE STRAIGHT SHUT REFRABRICATED CONC. MANUF. BY KEYSTONE RETAINING WALL SYSTEMS - COLOR - "WALNUT"



**C1 Building Section**  
SCALE: 1/4" = 1'-0"



**F1 Building Section**  
SCALE: 1/4" = 1'-0"

**F5 Building Section**  
SCALE: 1/4" = 1'-0"

**Belle Tire**  
Northville Twp. MI  
Meijer Outlot #54  
39931 8 Mile Road  
Northville Township, MI 48167

**Building Sections**

Owner Review: February 12, 2016  
Site Plan / Special Land Use: February 26, 2016  
Final Site Plan: May 25, 2016  
REVISED Final Site Plan: July 22, 2016  
BIDDING / PERMIT: February 16, 2017

15-540

**A 401**