



**CHRISTOPHER EMIGH ARCHITECTS**  
A PROFESSIONAL CORPORATION

628 E. Parent Avenue  
Suite 1000  
Royal Oak, MI 48067  
248-258-6495 (O)  
248-330-3995 (C)  
cemighn@emigharchitects.com

Consult

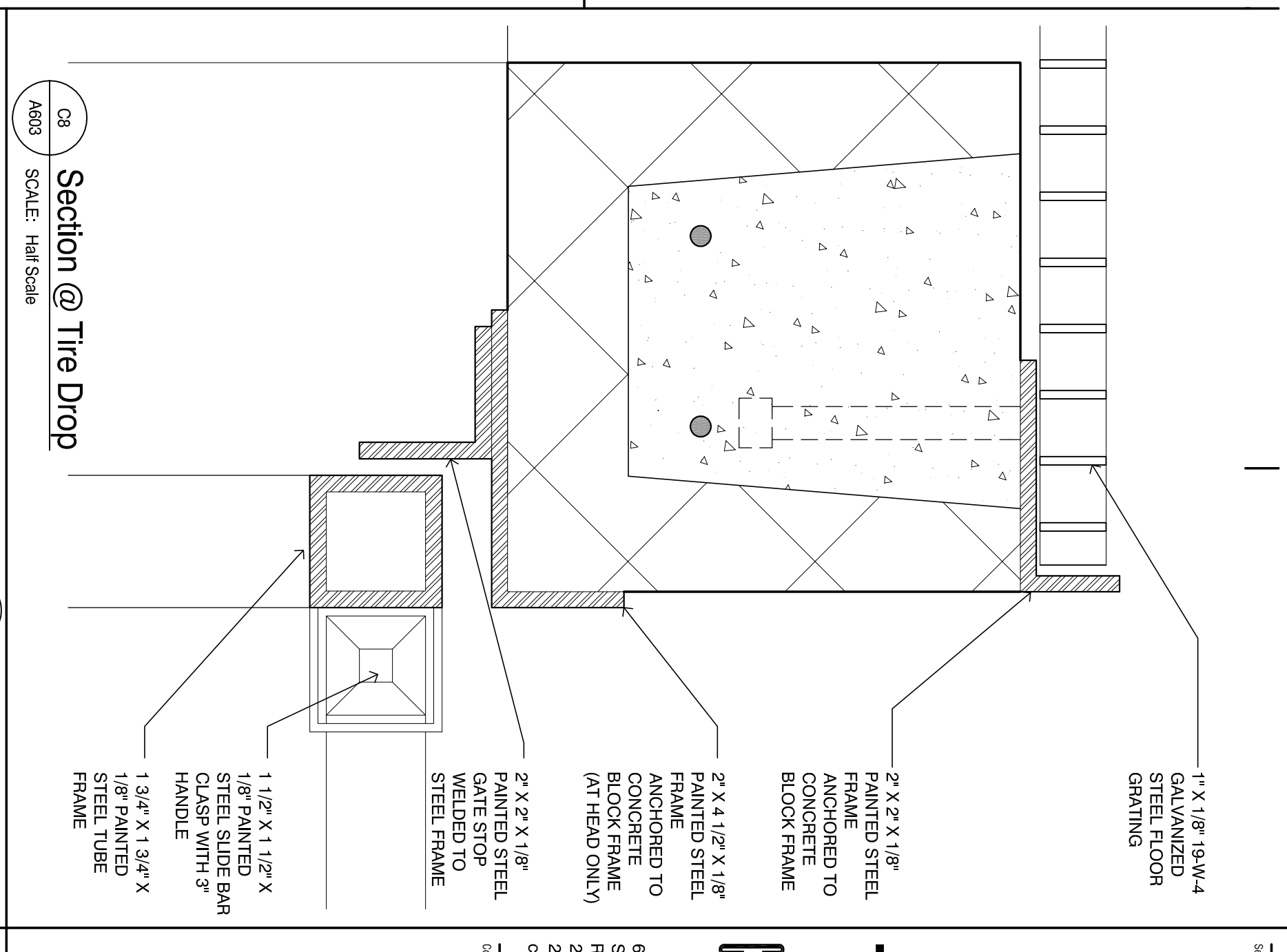
**Belle Tire**  
Northville Twp. MI  
Meier Outlot #54  
39931 8 Mile Road  
Northville Township, MI 48167

**Details**

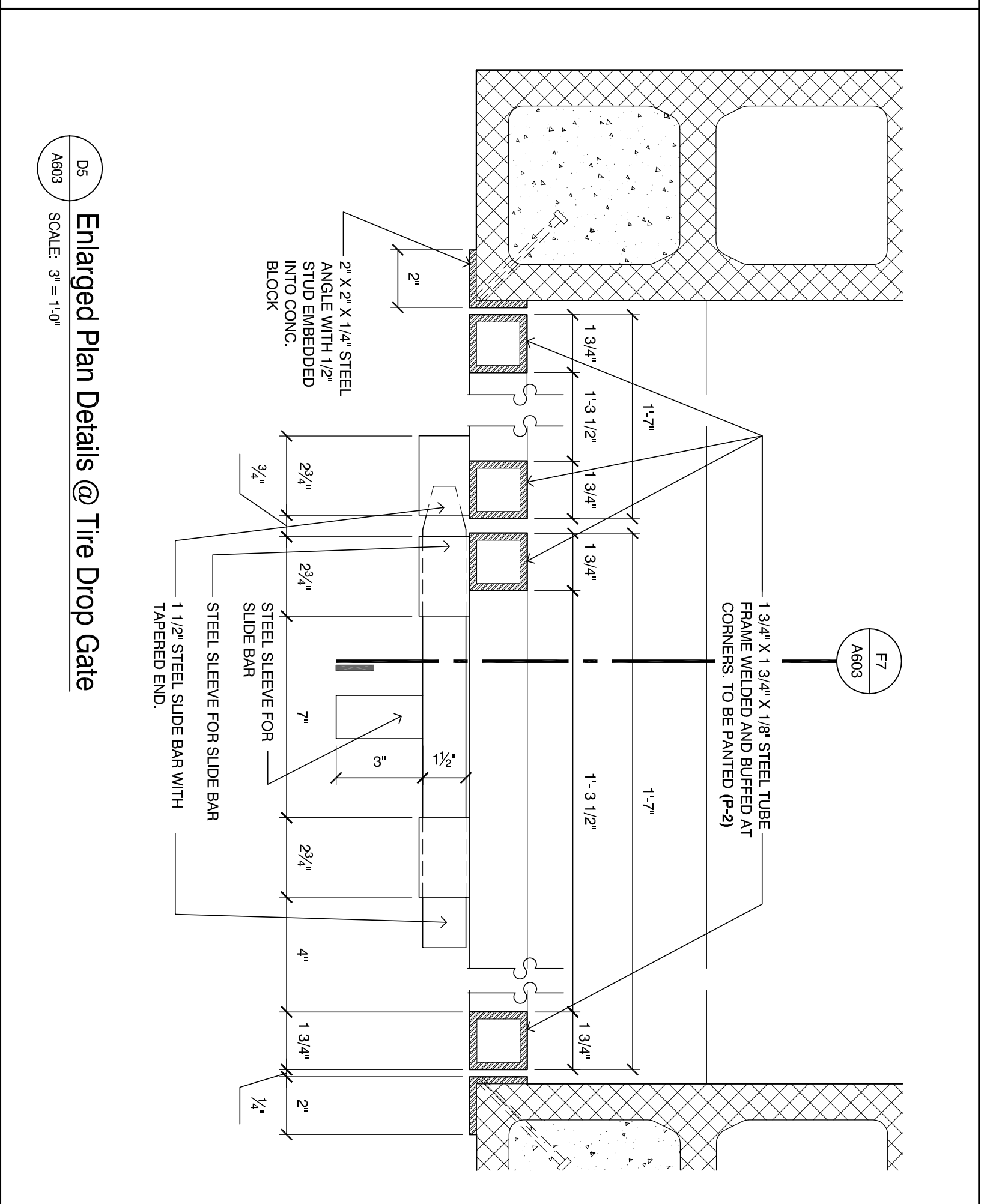
Revised:  
Owner Review: February 12, 2016  
Site Plan / Special Land Use: February 26, 2016  
Final Site Plan: May 25, 2016  
REVISED Final Site Plan: July 22, 2016  
BIDDING / PERMIT: February 16, 2017

15-540

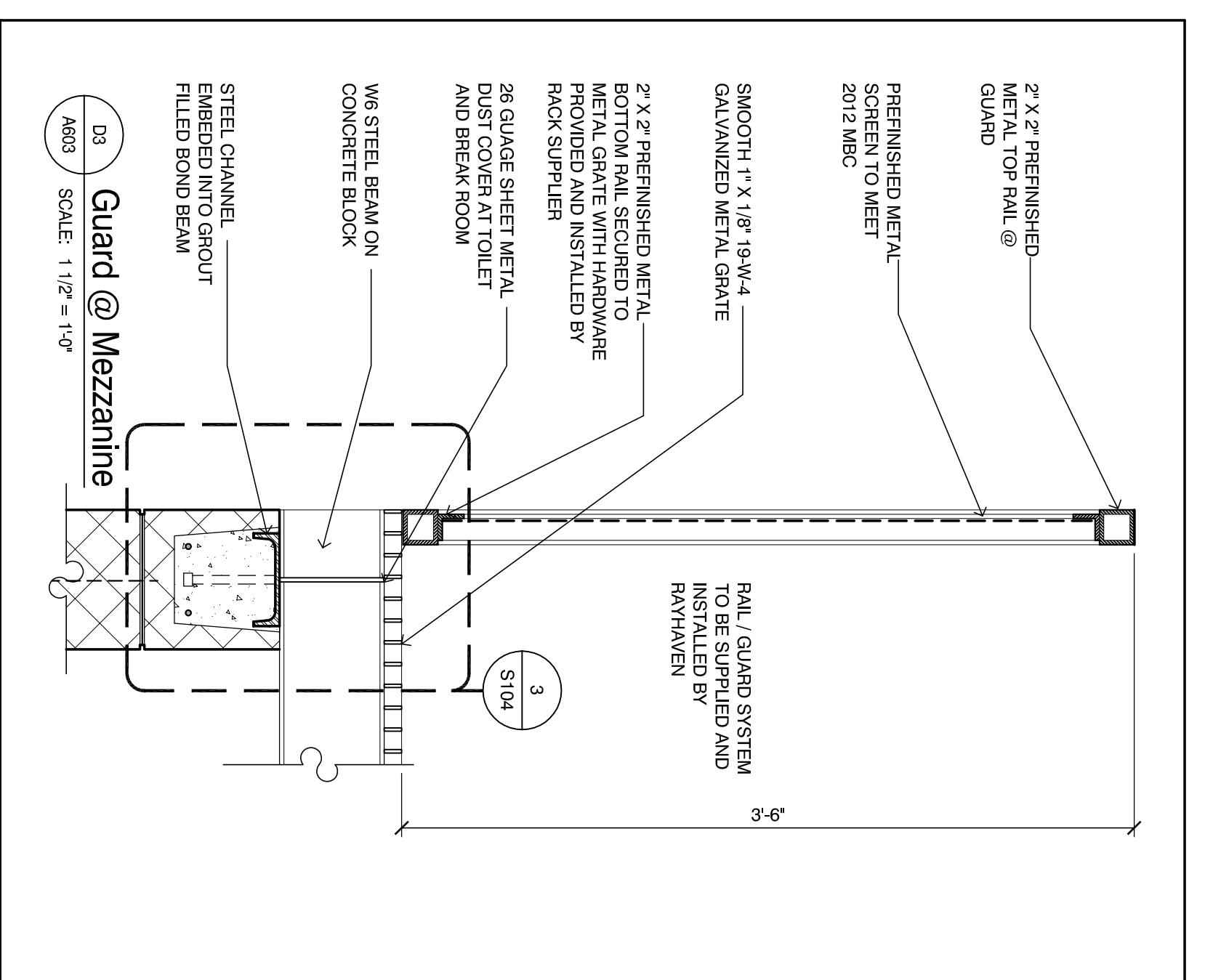
**A 603**



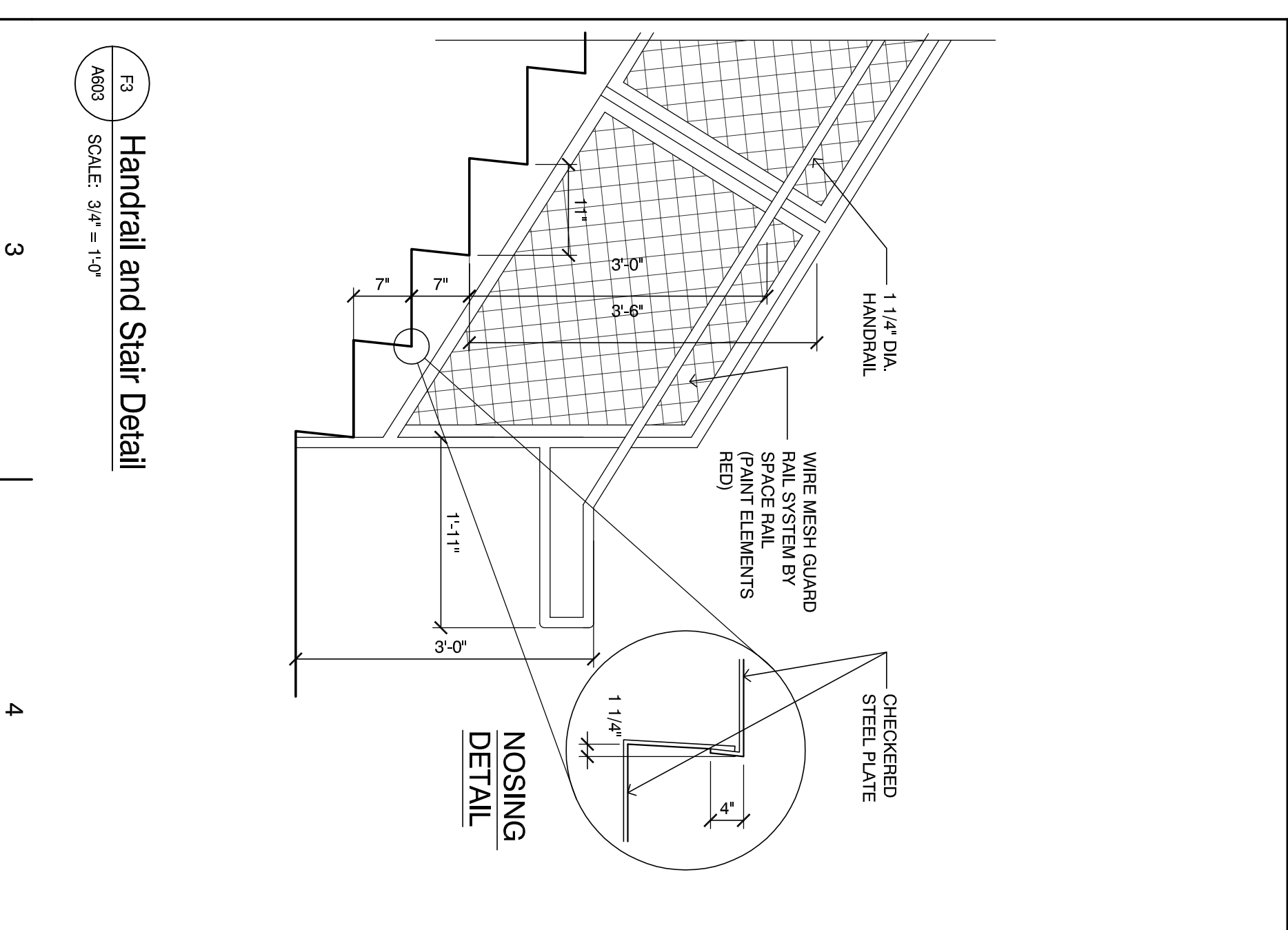
**A603 Section @ Tire Drop**  
SCALE: Half Scale



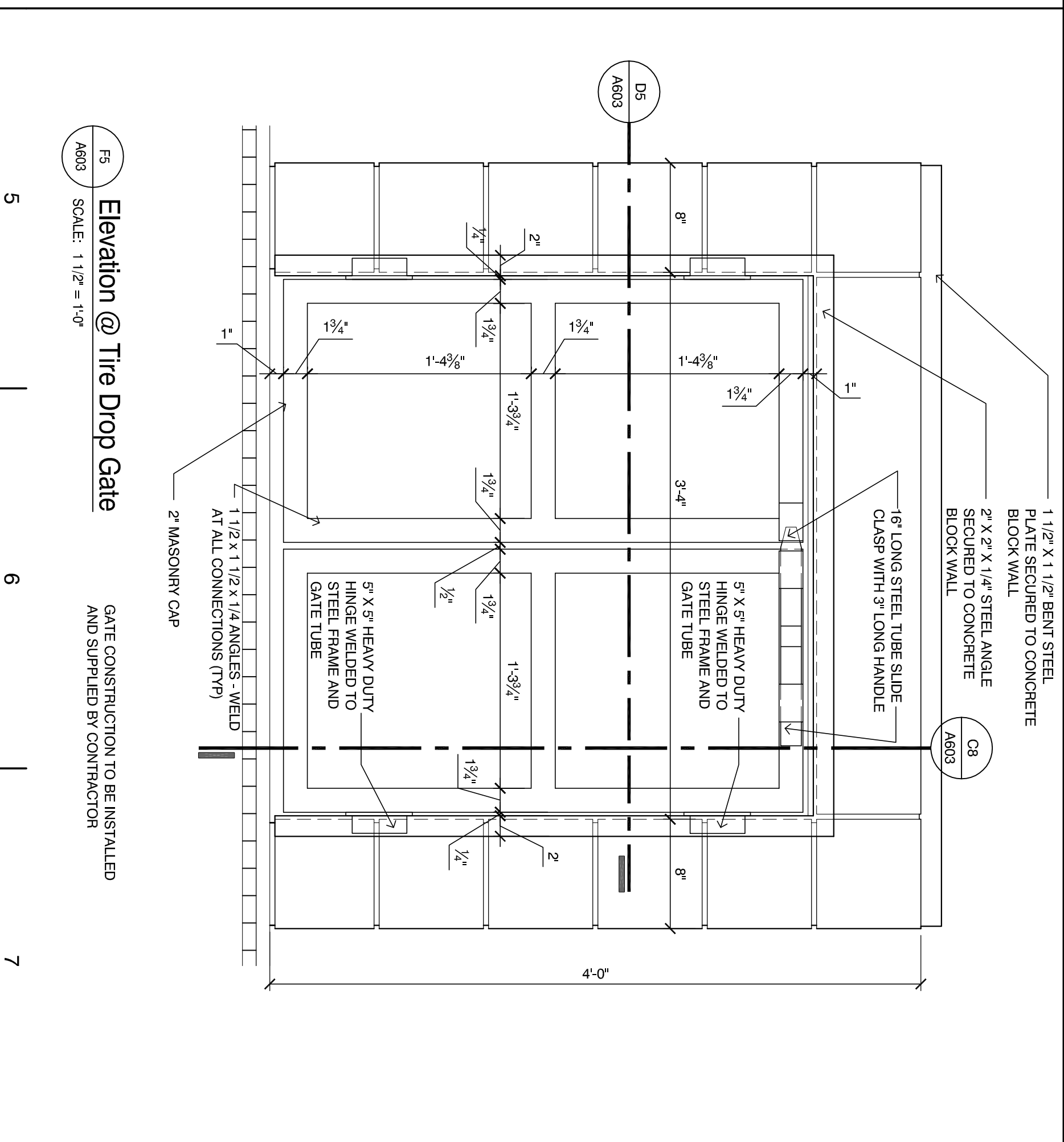
**A603 Enlarged Plan Details @ Tire Drop Gate**  
SCALE: 3\"/>



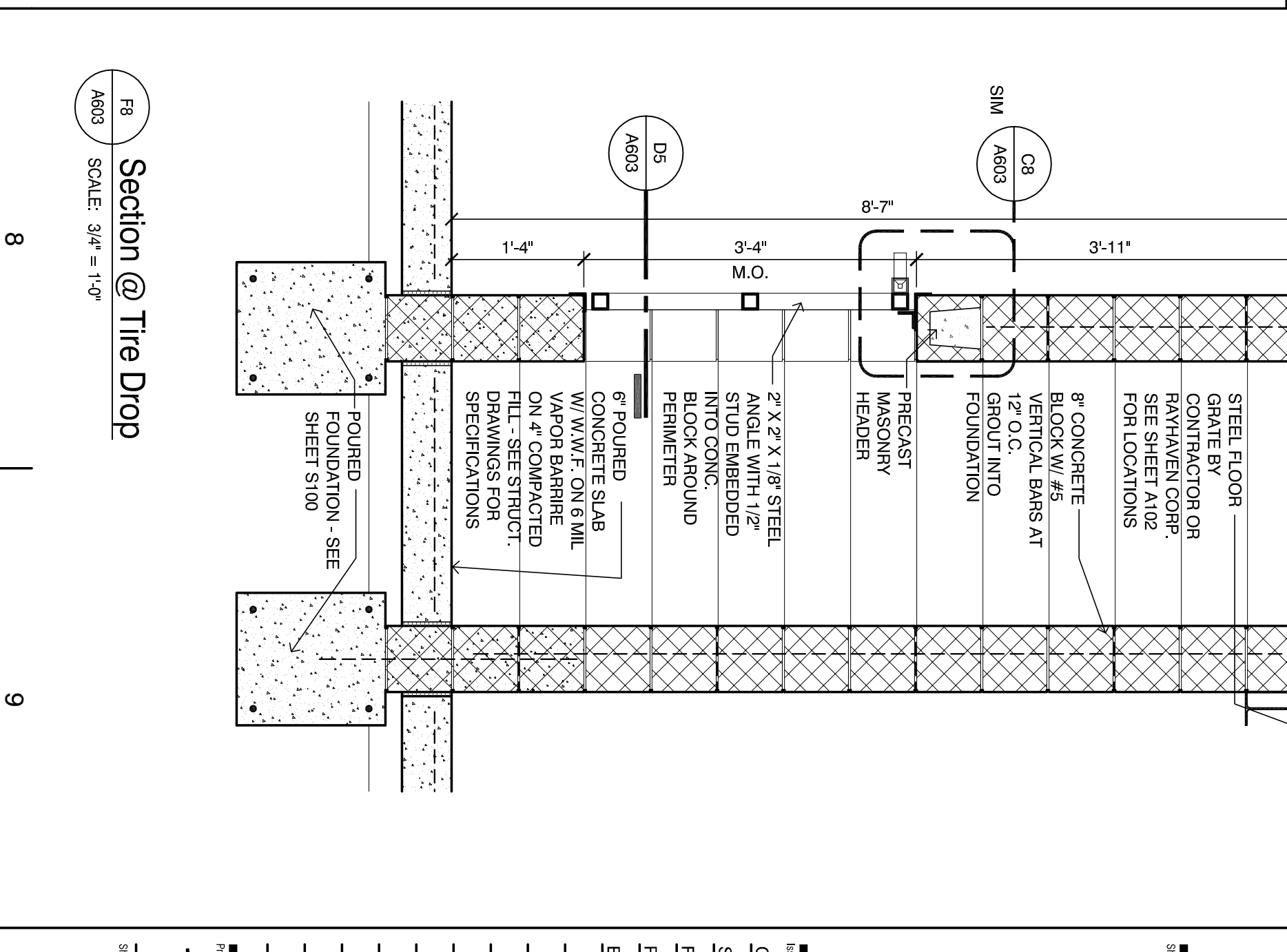
**A603 Guard @ Mezzanine**  
SCALE: 1\"/>



**A603 Handrail and Stair Detail**  
SCALE: 3\"/>



**A603 Elevation @ Tire Drop Gate**  
SCALE: 1\"/>



**A603 Section @ Tire Drop**  
SCALE: 3\"/>