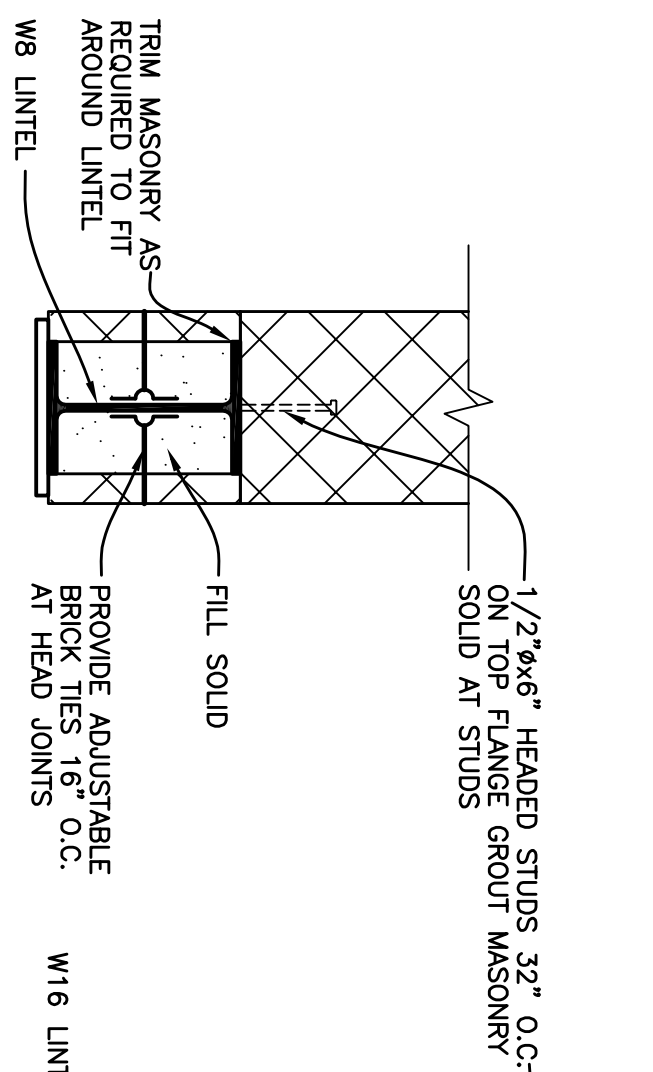


BEARING PLATE SCHEDULE		
MARK	DESCRIPTION	REMARKS
BP1	7"x3/8"x0'-10"	SEE DETAIL 14/S201 SIM. NO SLOTS NO STUDS
BP2	7"x3/8"x0'-7"	
BP3	7"x3/8"x1'-5"	SEE DETAIL 14/S201

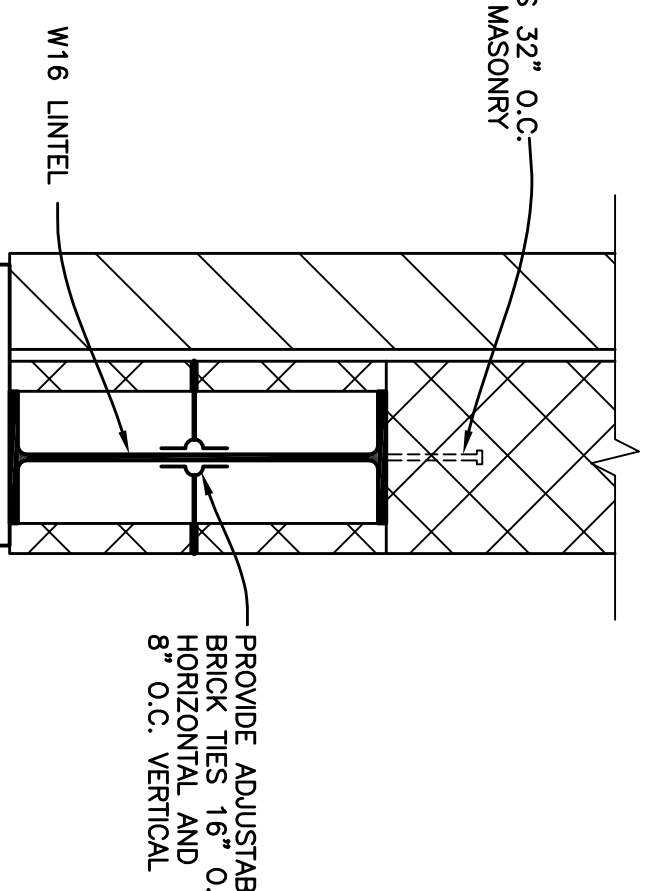
LINTEL SCHEDULE		
MARK	DESCRIPTION	8" BEARING EACH END-U.N.O.
L1	W8x10 + 5/16" PLATE	
L2	W16x36 + 5/16" PLATE	
L3	W16x26 + 5/16" PLATE	
L4	W8x18 + 5/16" PLATE	
L5	W16x45 + 5/16" PLATE	
L6	HSS16x6x5/8 + 5/16" PLATE	

LINTEL NOTES: 1. PLATES ON LINTELS EXTEND WIDTH OF MASONRY OPENINGS UNL. (SEE ARCH. DRAWINGS)

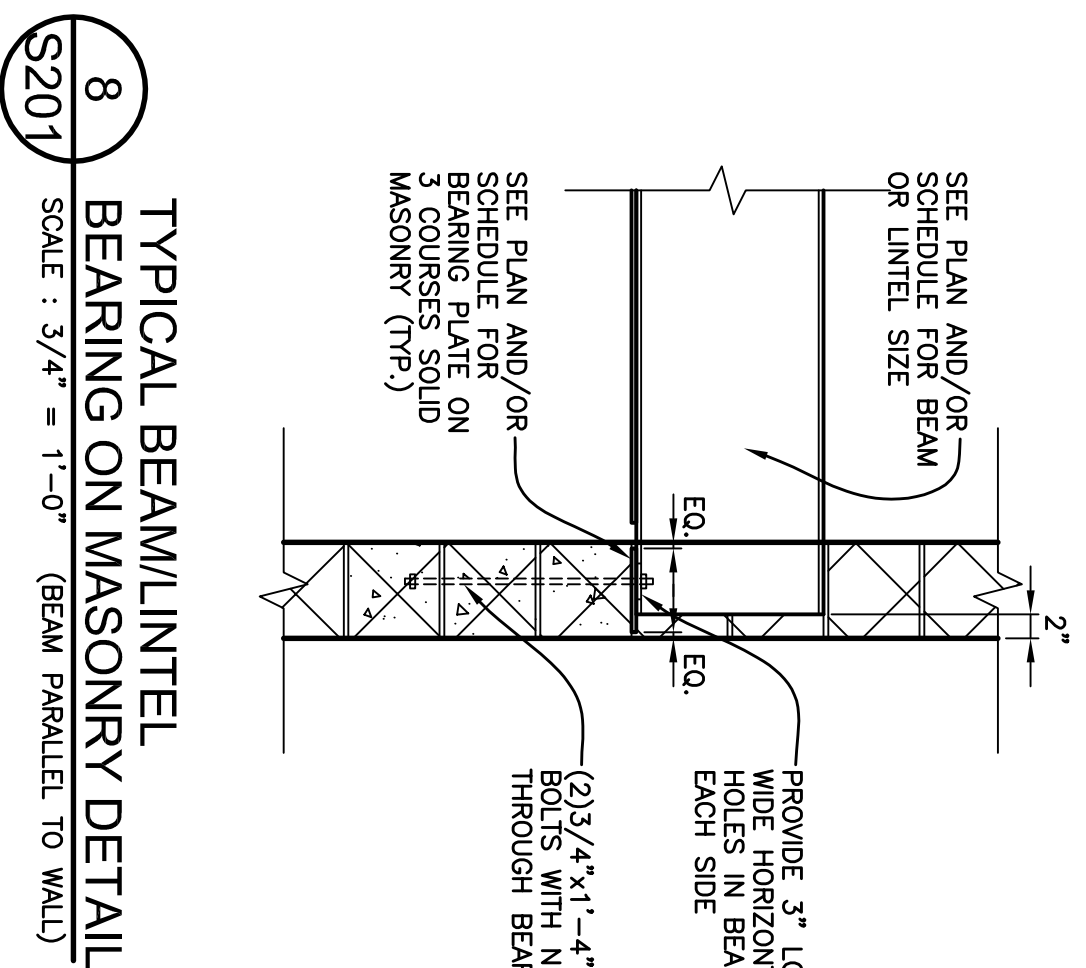
- HOLD EDGE OF PLATE ON LINTEL BACK FROM EACH FACE OF MASONRY 1/4"
- WELD 1/2"x6"x6" HEADED STUDS 32" O.C. TO TOP FLANGE OF ALL WIDE FLANGE LINTELS
- ALL EXTERIOR LINTELS TO BE GALVANIZED 990 PER ASTM 123
- SEE LINTEL DETAILS 9, 10, 11/S201



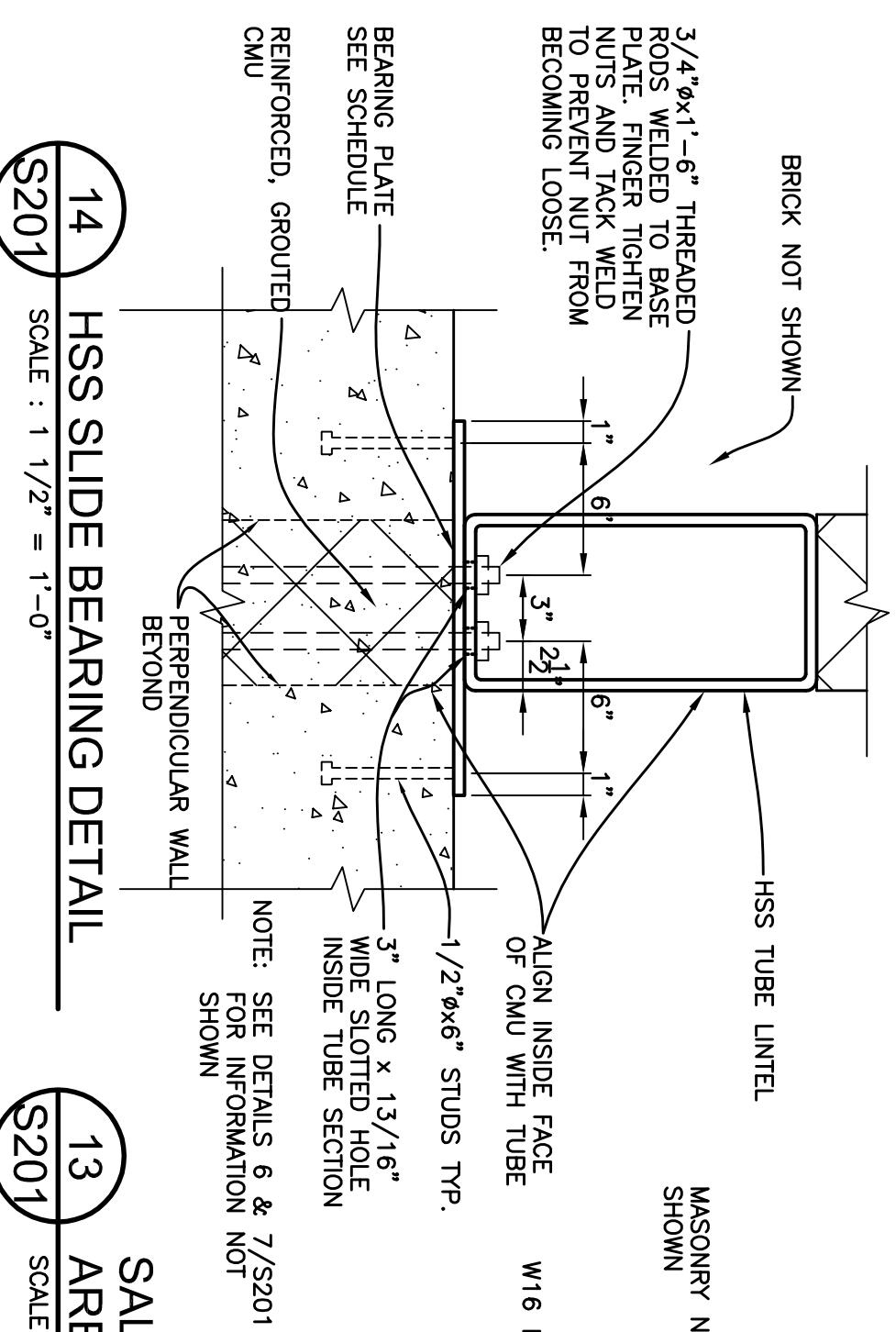
10 TYPICAL LINTEL DETAIL AT W8 BEAM
SCALE : 1 1/2" = 1'-0"



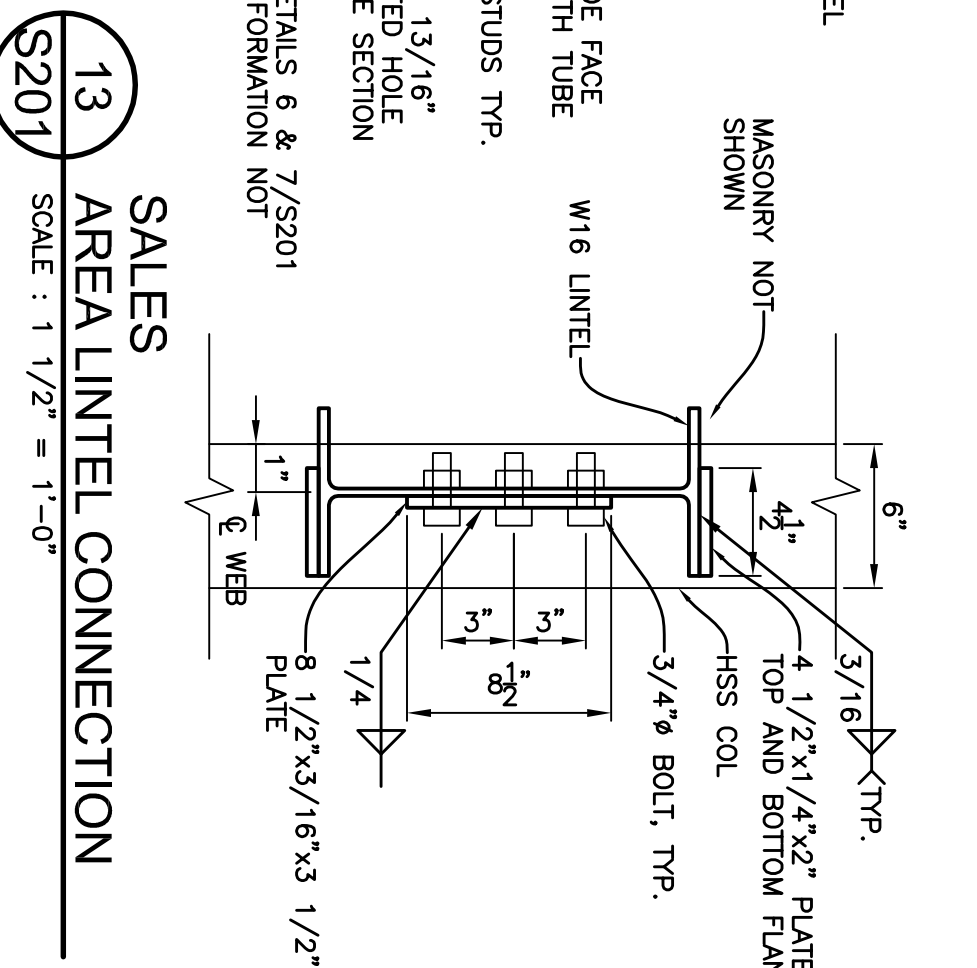
9 TYPICAL LINTEL DETAIL AT W16 BEAM
SCALE : 1 1/2" = 1'-0"



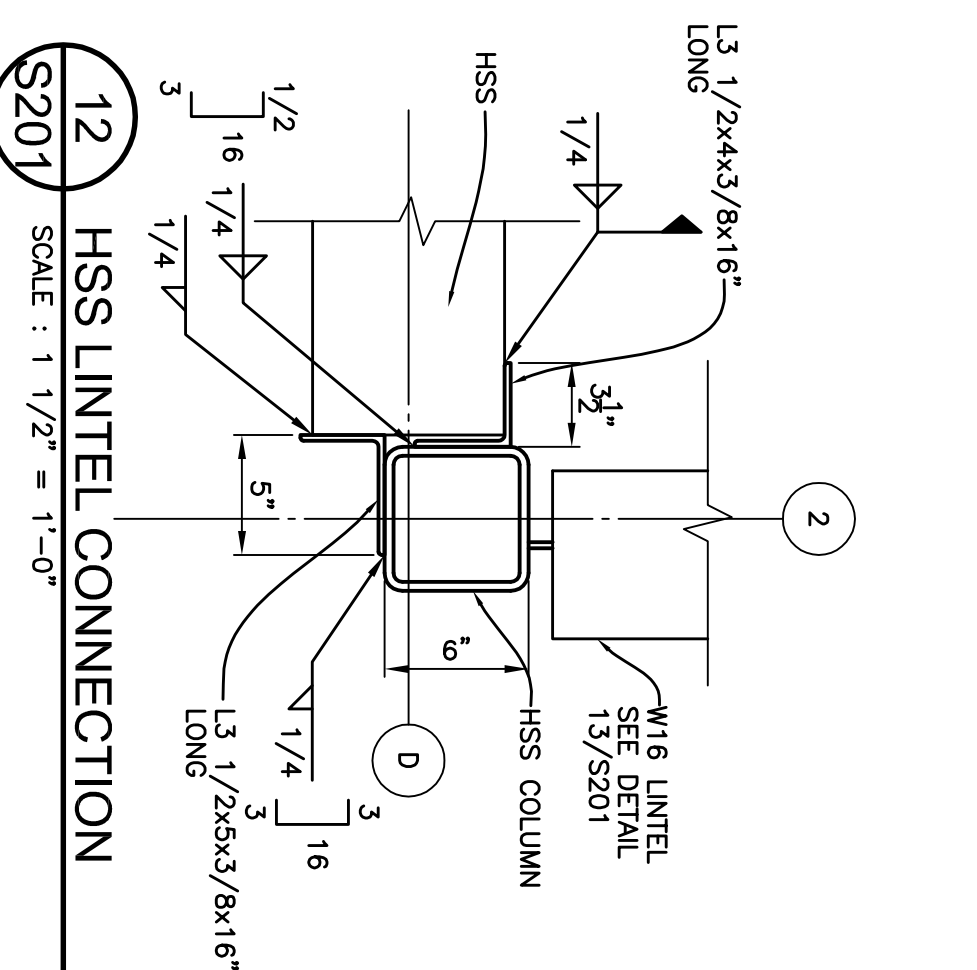
8 TYPICAL BEARING ON MASONRY DETAIL
SCALE : 3/4" = 1'-0" (BEAM PARALLEL TO WALL)



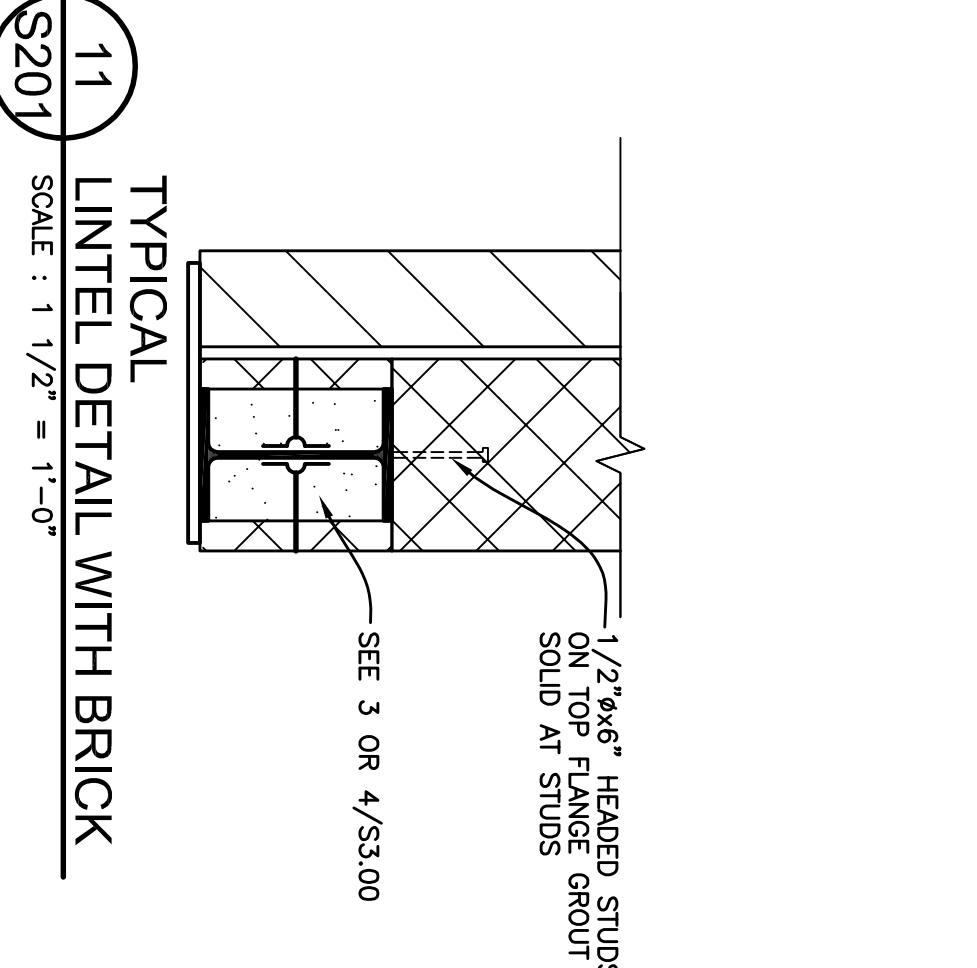
14 HSS SLIDE BEARING DETAIL
SCALE : 1 1/2" = 1'-0"



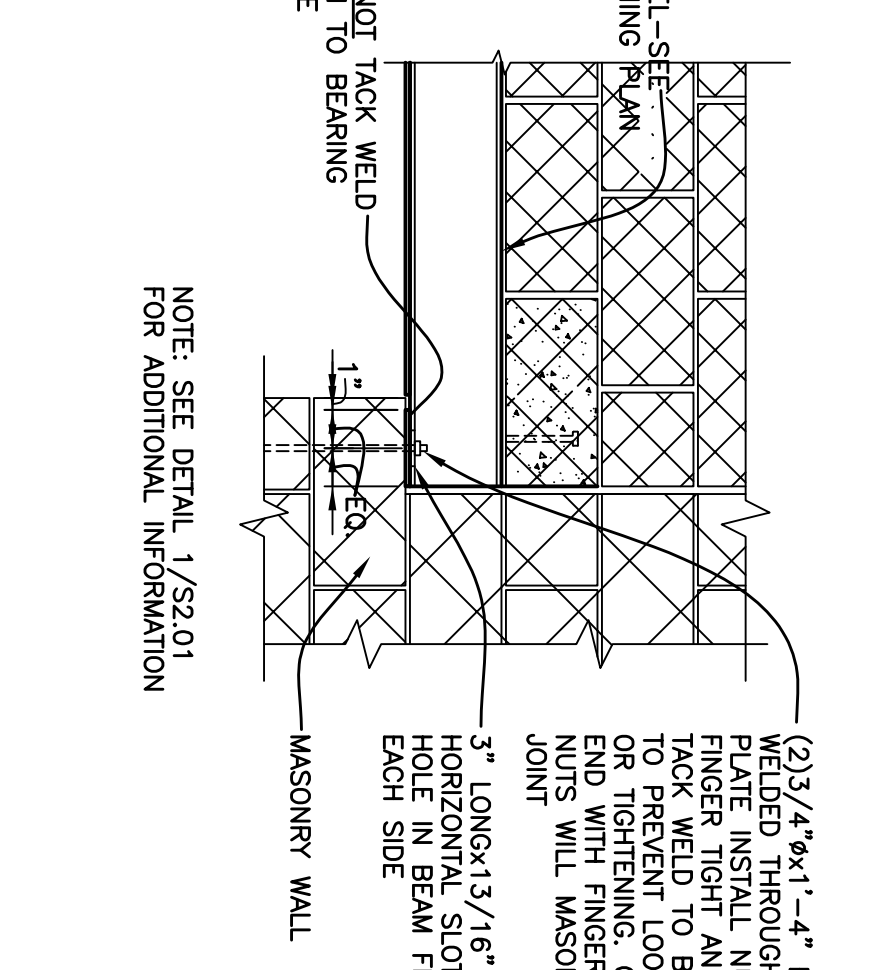
13 SALES AREA LINTEL CONNECTION
SCALE : 1 1/2" = 1'-0"



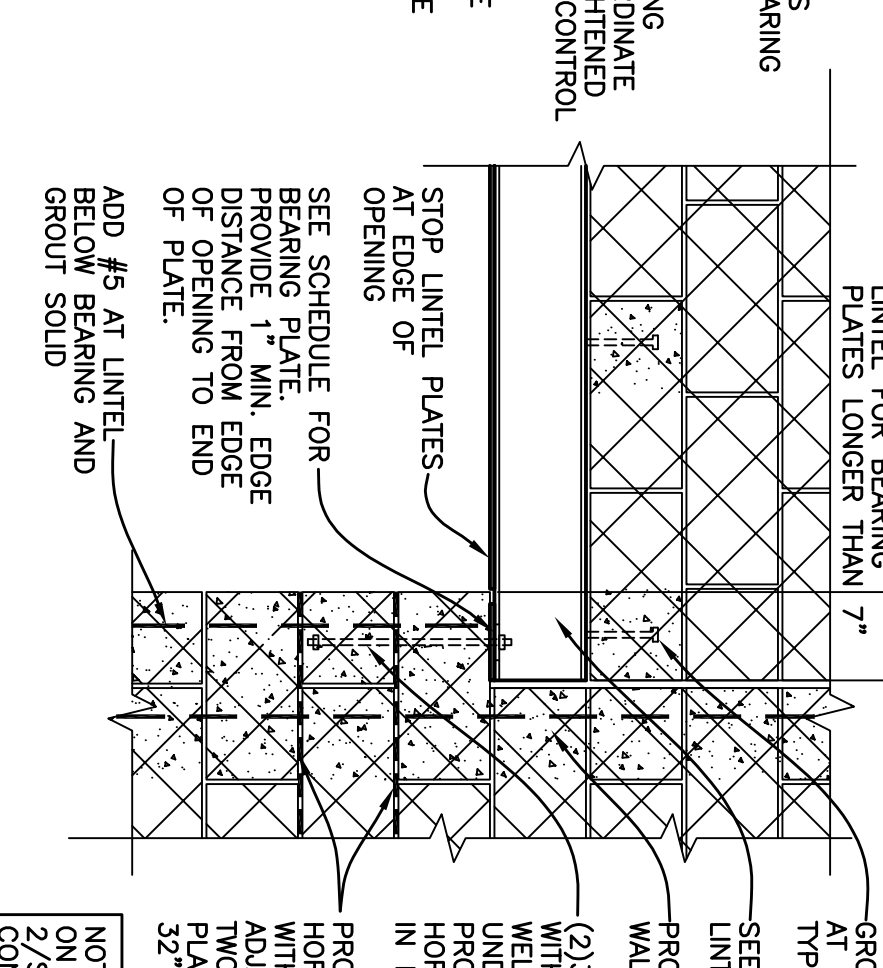
12 HSS LINTEL CONNECTION
SCALE : 1 1/2" = 1'-0"



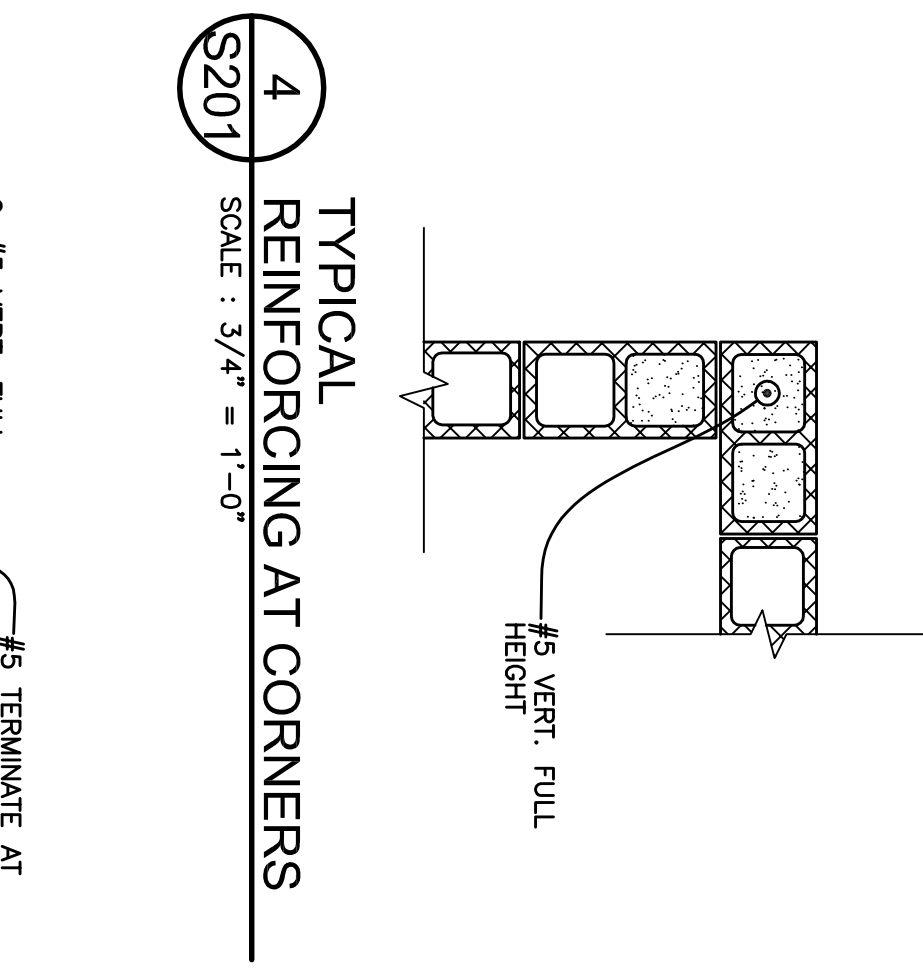
11 TYPICAL LINTEL DETAIL WITH BRICK
SCALE : 1 1/2" = 1'-0"



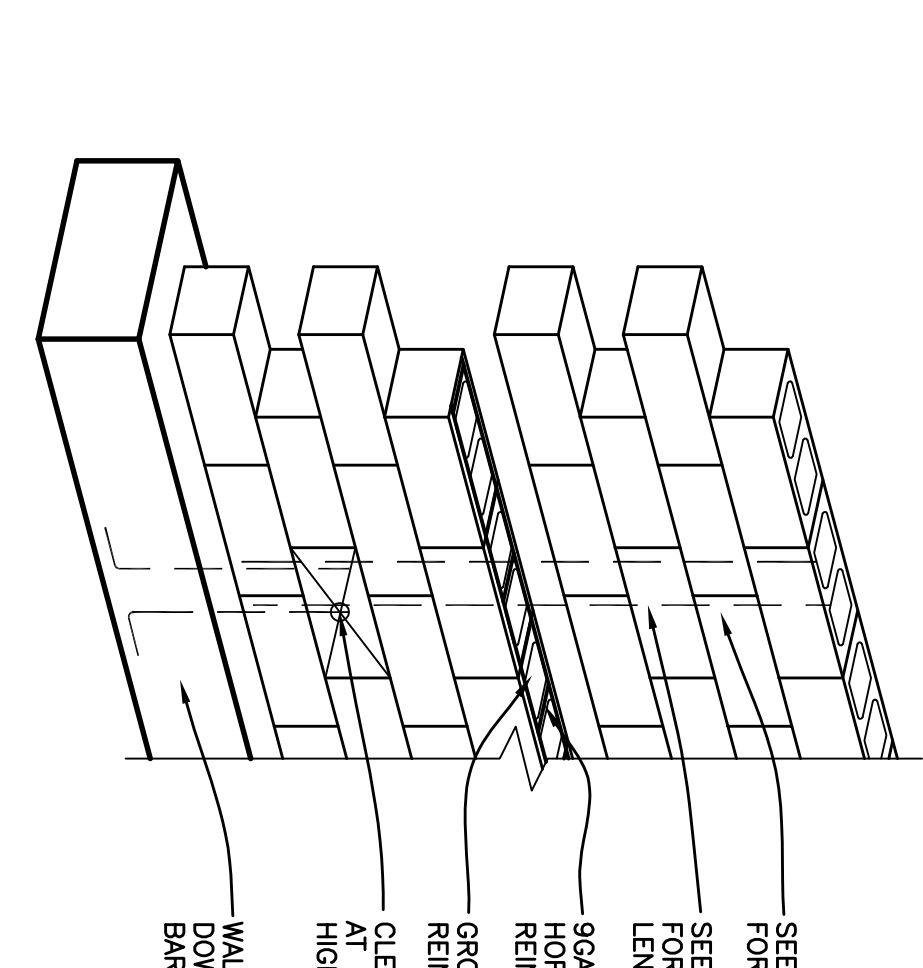
7 TYPICAL SLIDE CONNECTION LINTEL DETAIL
SCALE : 3/4" = 1'-0"



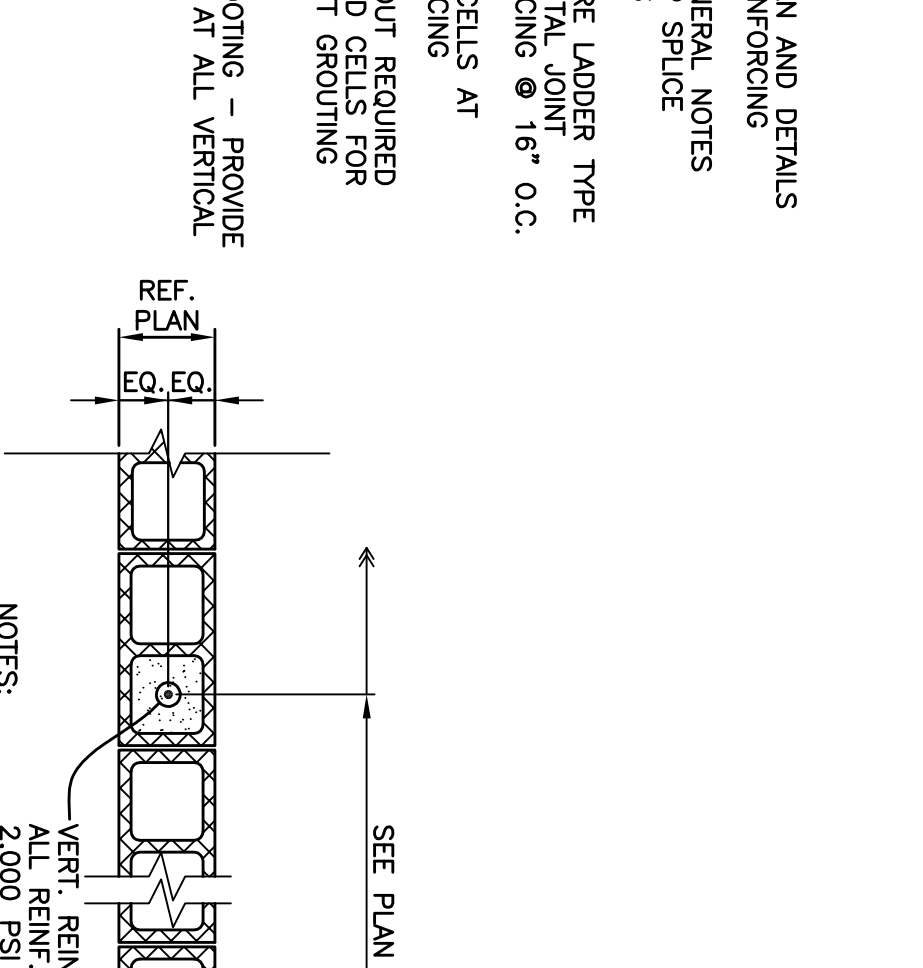
6 TYPICAL LINTEL BEARING ON MASONRY DETAIL
SCALE : 3/4" = 1'-0" (LINTEL PARALLEL TO WALL)



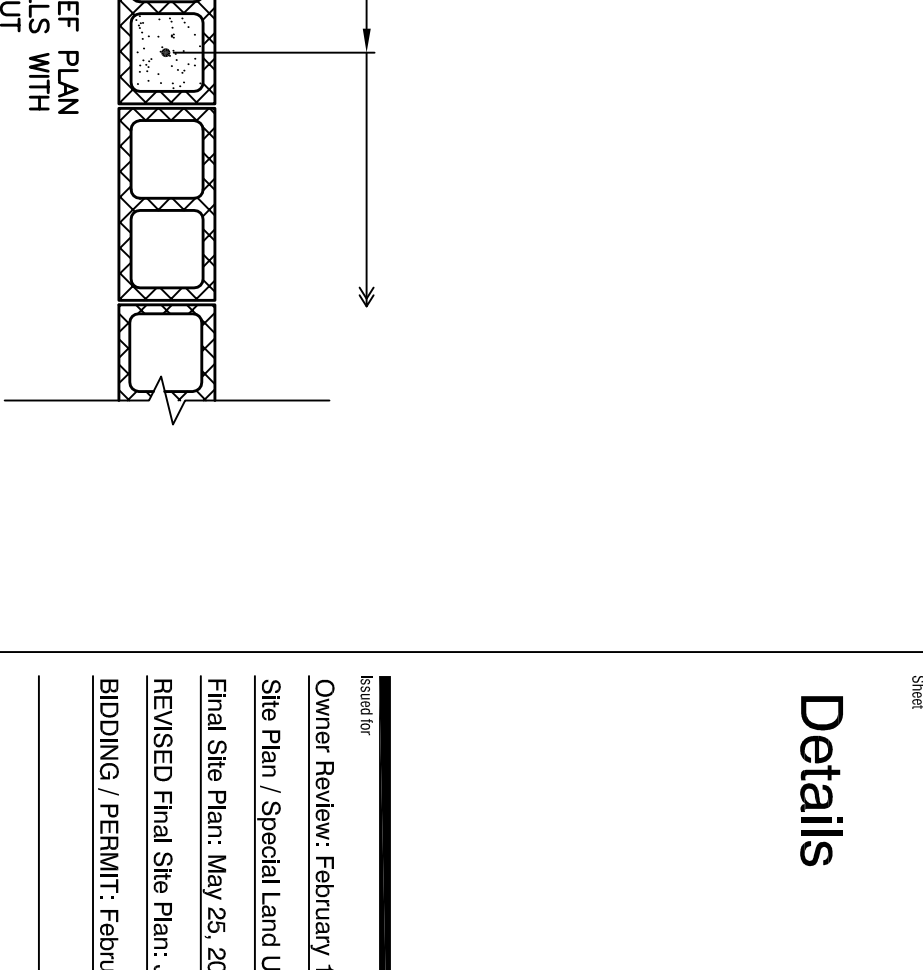
4 TYPICAL REINFORCING AT CORNERS
SCALE : 3/4" = 1'-0"



3 TYPICAL REINFORCING ALONG SIDE OPENING
SCALE : 3/4" = 1'-0"



2 TYPICAL MASONRY CONSTRUCTION DETAIL
SCALE : NONE



5 TYPICAL BOND BEAM CORNER DETAIL
SCALE : 3/4" = 1'-0"

CONCEPT ENGINEERS
 628 E. Parent Avenue
 Suite 106
 Royal Oak, MI 48067
 248.330.2395 (O)
 cen@conceptengineers.com

Shymanski & Associates, L.L.C.
 STRUCTURAL ENGINEERS
 31260 Freeland Rd. N.
 Livonia, Michigan 48154
 Phone: 734.855.4810 Fax: 734.855.4899
 cen@shymanskiandassociates.com

Belle Tire
 Northville Twp., MI
 Meijer Outlet #54
 39931 E Miller Road
 Northville Township, MI 48167

Details

Owner Review: February 12, 2016
 Site Plan / Special Land Use: February 28, 2016
 Final Site Plan: May 25, 2016
 Revised Final Site Plan: July 22, 2016
 BIDDING / PERMIT: February 18, 2017

Sheet Number: **S201**
 15-540